

## System Requirements


### Web Browsers

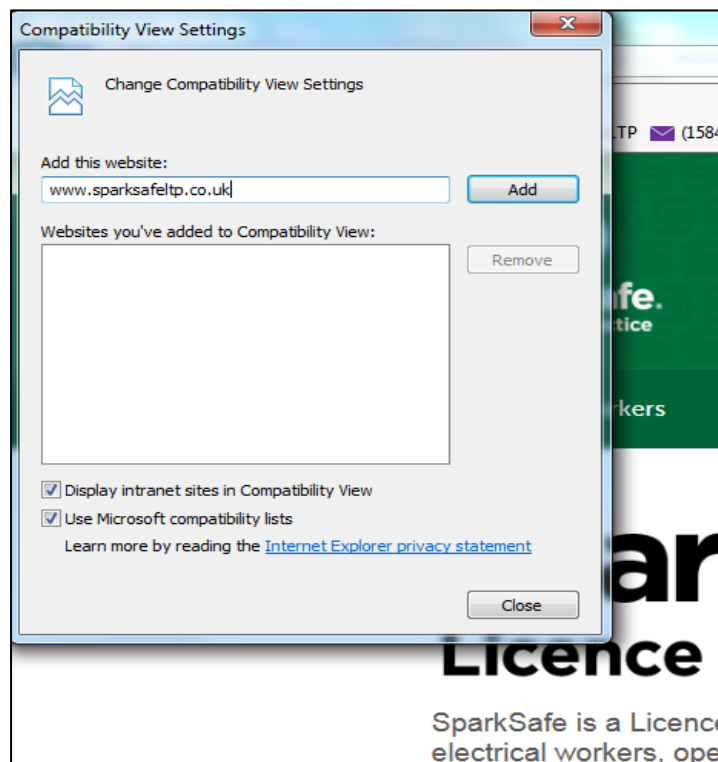
The web browsers below are supported, however Internet Explorer 9 is recommended

- Internet Explorer 7 and above
- Firefox
- Chrome
- Safari

### Compatibility Mode

Compatibility mode is a feature that helps you view webpages that were designed for previous versions of the browser. When web browsers are updated, it can lead to difficulties accessing and viewing certain information online. To reduce the likelihood of these issues, we recommend that switch on compatibility view setting. To enable compatibility mode on Internet Explorer

- Open your internet browser (**Internet Explorer**)
- Type in [www.sparksafeltp.co.uk](http://www.sparksafeltp.co.uk) into the address bar and press enter. You should be directed to the SparkSafe LTP homepage
- Click on the tools button  located at the top right hand side of the screen or from the menu bar
- Click on **Compatibility View Settings**
- Under **Add this website** type in [www.sparksafeltp.co.uk](http://www.sparksafeltp.co.uk) (Fig. 1.1)



- Click Add
- Click Close

This should allow you to access the system without any difficulty. If you do experience any issues, please contact the SparkSafe team on 028 25 666835.

## Application Software

Adobe Reader is required as you may have to download and access PDF documents. If you do not have Adobe you can download it for free by following the instructions below

- Type this URL into your web browser <http://get.adobe.com/uk/reader/>
- Click **Install now**
- When prompted select **save and run**
- Click **next** if prompted
- Click **finish**

## Screen Resolution

Screen Resolution helps to determine the size and sharpness of items displayed on your screen. The higher the resolution is the sharper and smaller images appear, so more will fit on your screen. If you set your resolution lower, fewer items will fit onto your screen, as they will appear larger. The recommended screen resolution for SparkSafeLTP is 1280 x 1024.

To set this resolution

- Right click on your desktop
- Click **personalise**
- Click **display**
- Click **change display settings**
- Use the **resolution** dropdown to change to 1280 x 1024
- Click Apply & OK
- Close the window